

Overview

The DFU project is a simple demonstration program based on the MCUXpresso SDK. It is enumerated as a dfu device, users can download one firmware to the dfu device with the tool called "dfu-util". the dfu example write the firmware content to flash or ram, and will check the CRC32 which stored in the last 4 byte of the firmware. if the CRC32 check is right, then the dfu example will run the new firmware. Generally speaking, the firmware doesn't have CRC32. so the following content will also introduce how to add CRC32 to the firmware.

System Requirement

Hardware requirements

- Mini/micro USB cable
- USB A to micro AB cable
- Hardware (Tower module/base board, and so on) for a specific device
- Personal Computer

Software requirements

- The project files for lite version examples are is:
<MCUXpresso_SDK_Install>/boards/<board>/usb_examples/usb_device_dfu_lite/<rtos>/<toolchain>.

For non-lite version examples the path is:

<MCUXpresso_SDK_Install>/boards/<board>/usb_examples/usb_device_dfu/<rtos>/<toolchain>.

Note

The <rtos> is Bare Metal or FreeRTOS OS.

- The PC's test tool is dfu-util. The tool and source code link is:
<http://dfu-util.sourceforge.net/index.html>
- All the release tool, source code and build instruction are in the upper link.
- For the release of the dfu-util software. please refer to the "Releases" chapter in the link and download the software according to your PC OS, if your PC is window a 64 bit, please download "dfu-util-0.9-win64.zip".
- For the source code and build instruction. please refer to the "Development" chapter in the link.

Getting Started

Hardware Settings

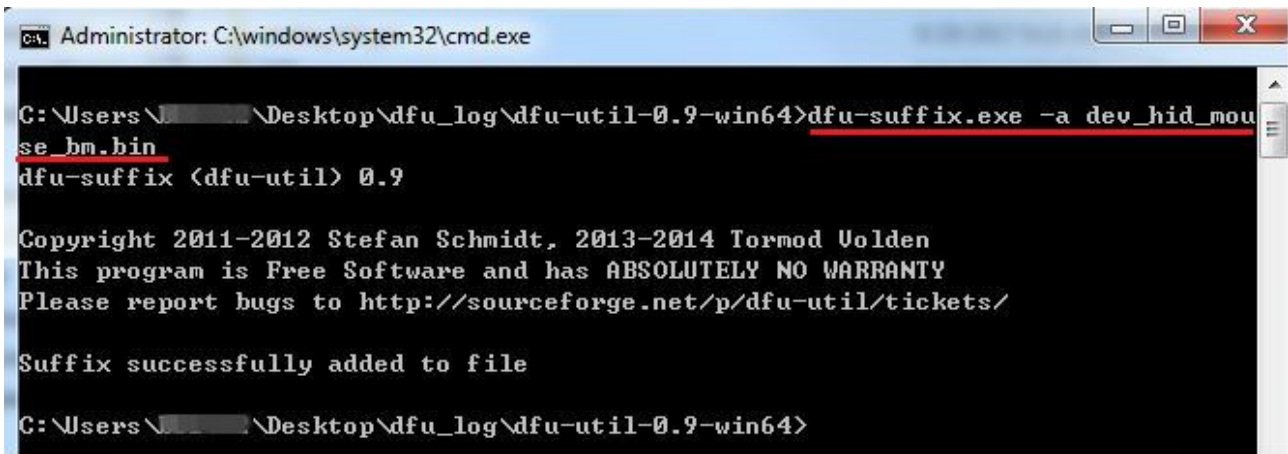
Note

Set the hardware jumpers (Tower system/base module) to default settings.

Prepare the example

1. Prepare firmware.
the dfu-example has one test firmware "dev_hid_mouse_bm.bin" which already has CRC32 and stored in same folder with this readme.
if you need to download other firmware, please refer to chapter "Adding CRC32 to your own binary" to add CRC32 to your firmware.
2. Download the dfu example program to the target board.
3. Connect the target board to the external power source (the example is self-powered).
4. Open the COM port in a terminal tool, such as the Tera Term.
5. Either press the reset button on your board or launch the debugger in your IDE to begin running the demo.

6. Connect a USB cable between the PC host and the USB device port on the board.
7. Open cmd of windows. use the tool unzip from dfu-util-0.9-win64.zip.
dfu-suffix.exe -a your_firmware



```
Administrator: C:\windows\system32\cmd.exe

C:\Users\...\Desktop\dfu_log\dfu-util-0.9-win64>dfu-suffix.exe -a dev_hid_mou
se_bm.bin
dfu-suffix <dfu-util> 0.9

Copyright 2011-2012 Stefan Schmidt, 2013-2014 Tormod Volden
This program is Free Software and has ABSOLUTELY NO WARRANTY
Please report bugs to http://sourceforge.net/p/dfu-util/tickets/

Suffix successfully added to file

C:\Users\...\Desktop\dfu_log\dfu-util-0.9-win64>
```

Figure 1: add suffix to firmware

8. Open cmd of windows. use the tool unzip from dfu-util-0.9-win64.zip.
run the command: dfu-util.exe -d your_vid:pid -D your_firmware.

```
Administrator: C:\windows\system32\cmd.exe

C:\Users\N...\Desktop\dfu_log\dfu-util-0.9-win64>dfu-util.exe -d 1fc9:001e -D
dev_hid_mouse_bm.bin
dfu-util 0.9

Copyright 2005-2009 Weston Schmidt, Harald Welte and OpenMoko Inc.
Copyright 2010-2016 Tormod Volden and Stefan Schmidt
This program is Free Software and has ABSOLUTELY NO WARRANTY
Please report bugs to http://sourceforge.net/p/dfu-util/tickets/

Opening DFU capable USB device...
ID 1fc9:001e
Run-time device DFU version 0101
Claiming USB DFU Runtime Interface...
Determining device status: state = appIDLE, status = 0
Device really in Runtime Mode, send DFU detach request...
Device will detach and reattach...
Opening DFU USB Device...
Claiming USB DFU Interface...
Setting Alternate Setting #0 ...
Determining device status: state = dfuIDLE, status = 0
dfuIDLE, continuing
DFU mode device DFU version 0101
Device returned transfer size 512
Copying data from PC to DFU device
Download      [=====] 100%          21308 bytes
Download done.
state(6) = dfuMANIFEST-SYNC, status(0) = No error condition is present
unable to read DFU status after completion

C:\Users\N...\Desktop\dfu_log\dfu-util-0.9-win64>
```

Figure 2: download firmfare

9.the com port will output "crc check ok", then confirm right port is connect to pc according to Getting Started , and one hid mouse will be enumerated by PC, The mouse arrow will be moving on PC screen in the rectangular rotation after download.

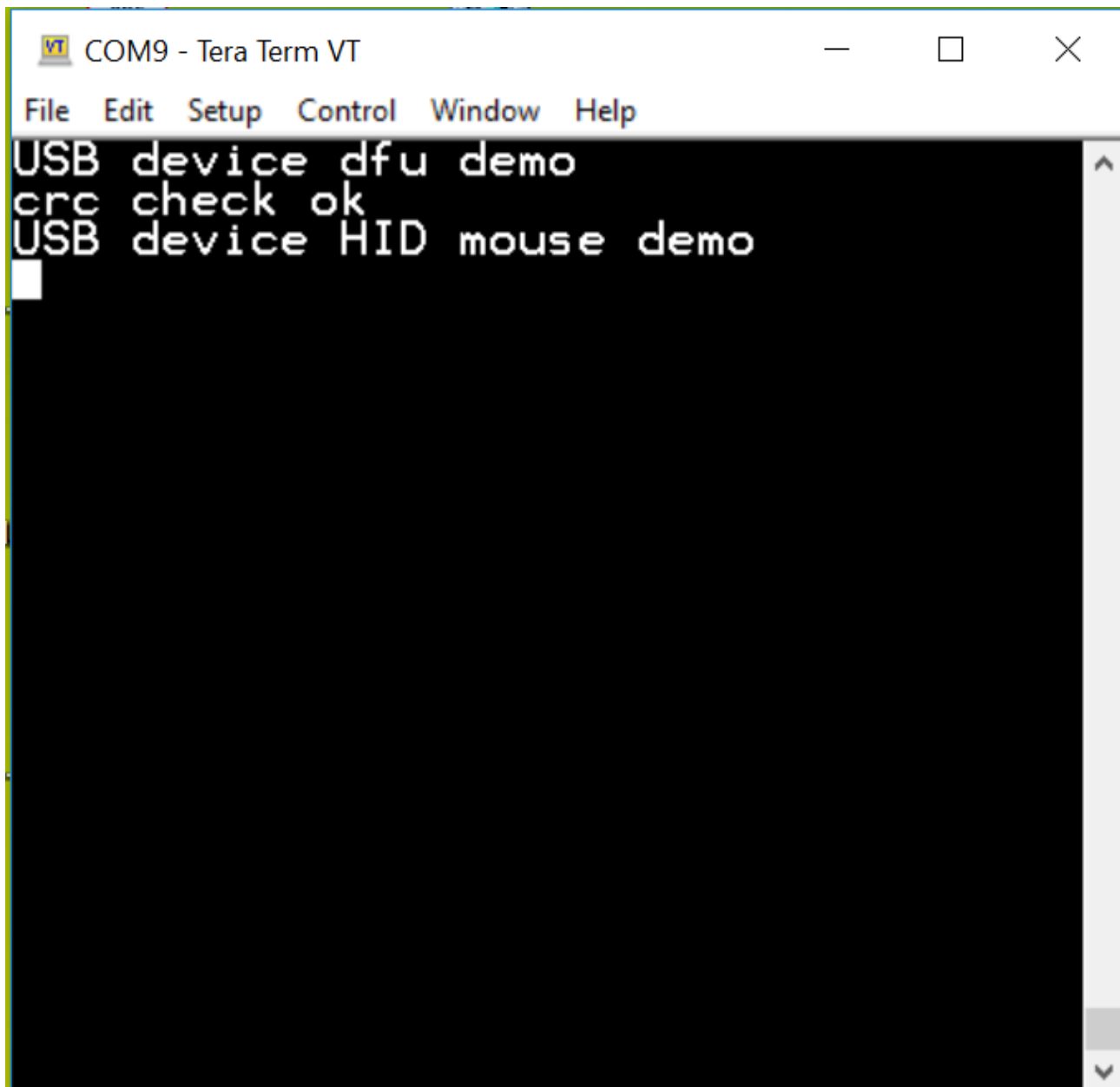


Figure 3: download firmware

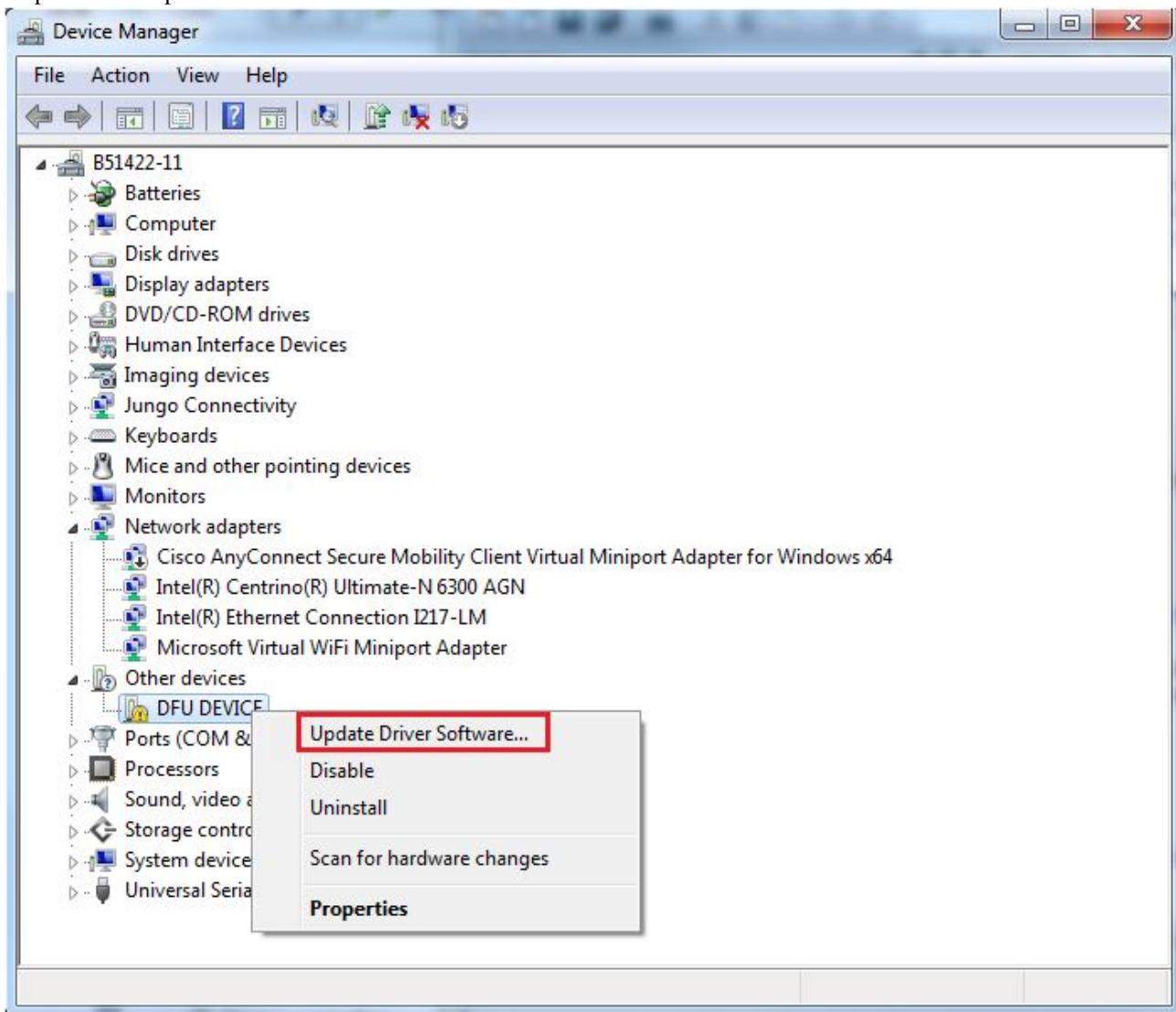
Note

- The test steps are done on windows 7 64bit PC.
- the example supports automated driver installation on winows8 later.
- User need install driver for dfu example the first time conneted to one PC port for some vista and windows 7 that don't support WinUSB WCID .
- On specific Windows PC, the dfu-util may show "Cannot open DFU device your_PID:VID". user can try re-build the dfu-util on your PC. see the following how to install driver.

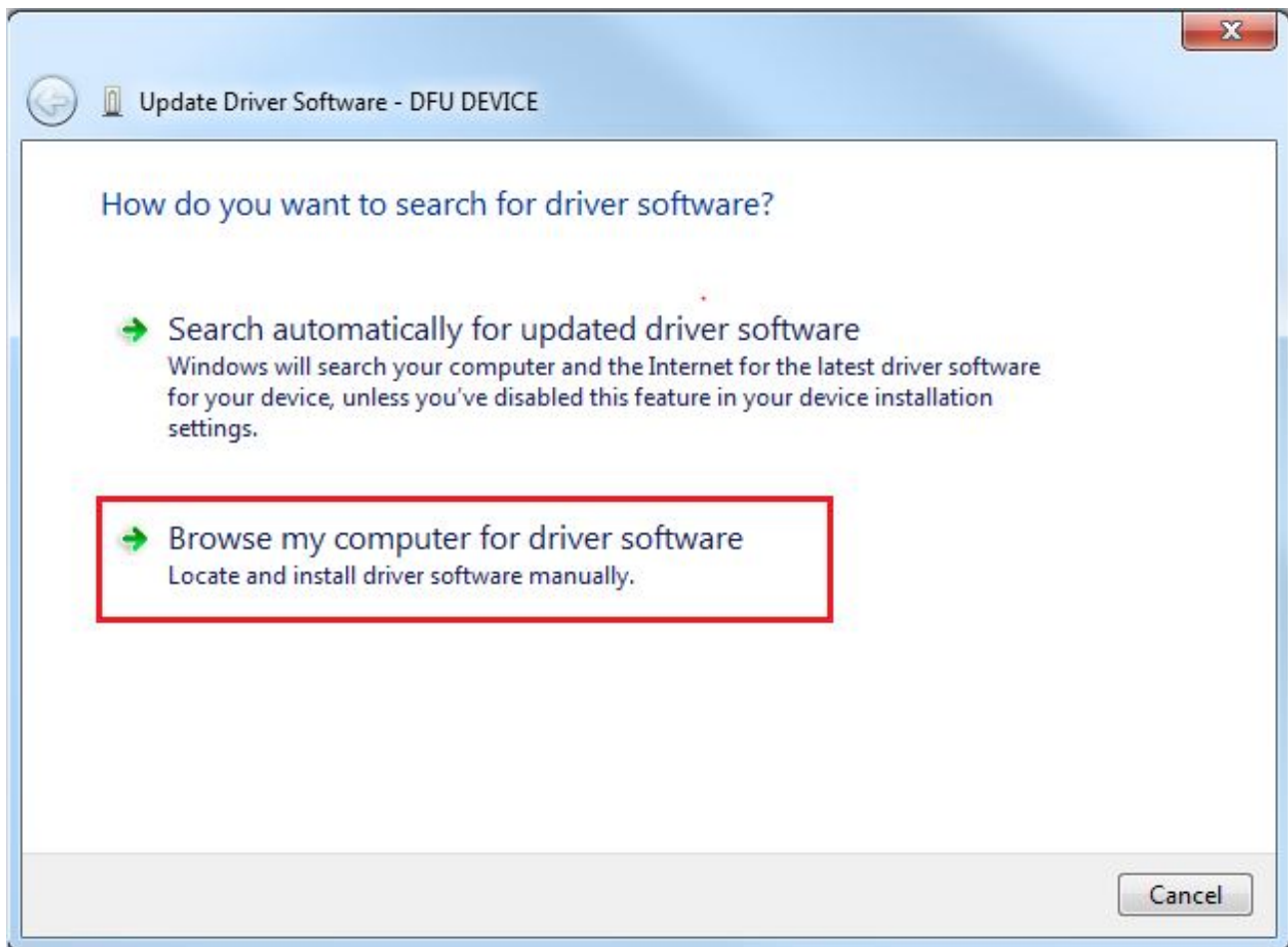
Installing the dfu driver for dfu example

Below are the steps to install the dfu driver on Windows 7 OS. Similar process applies to Windows XP OS.

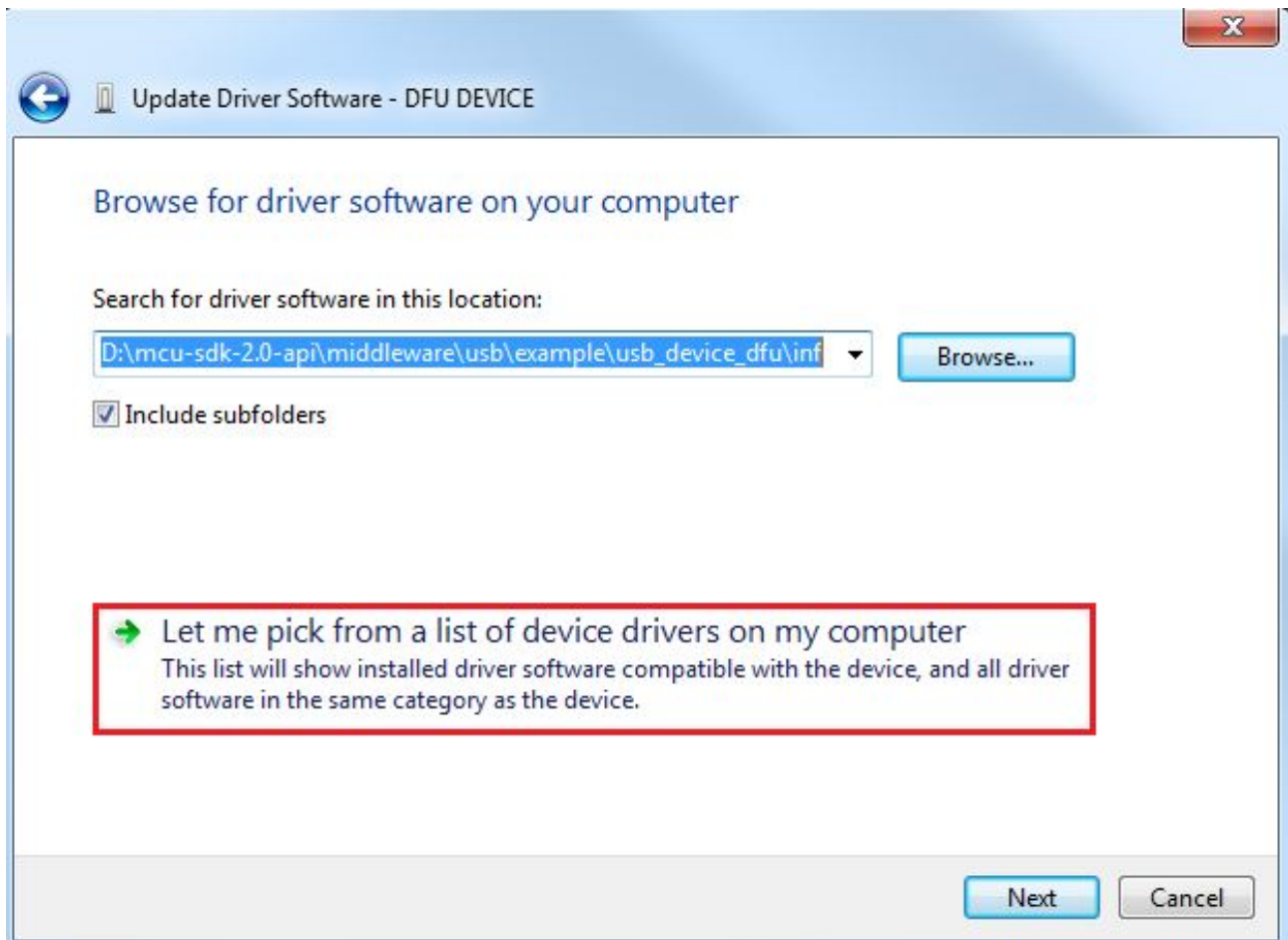
Step 1. Click "Update Driver Software..."



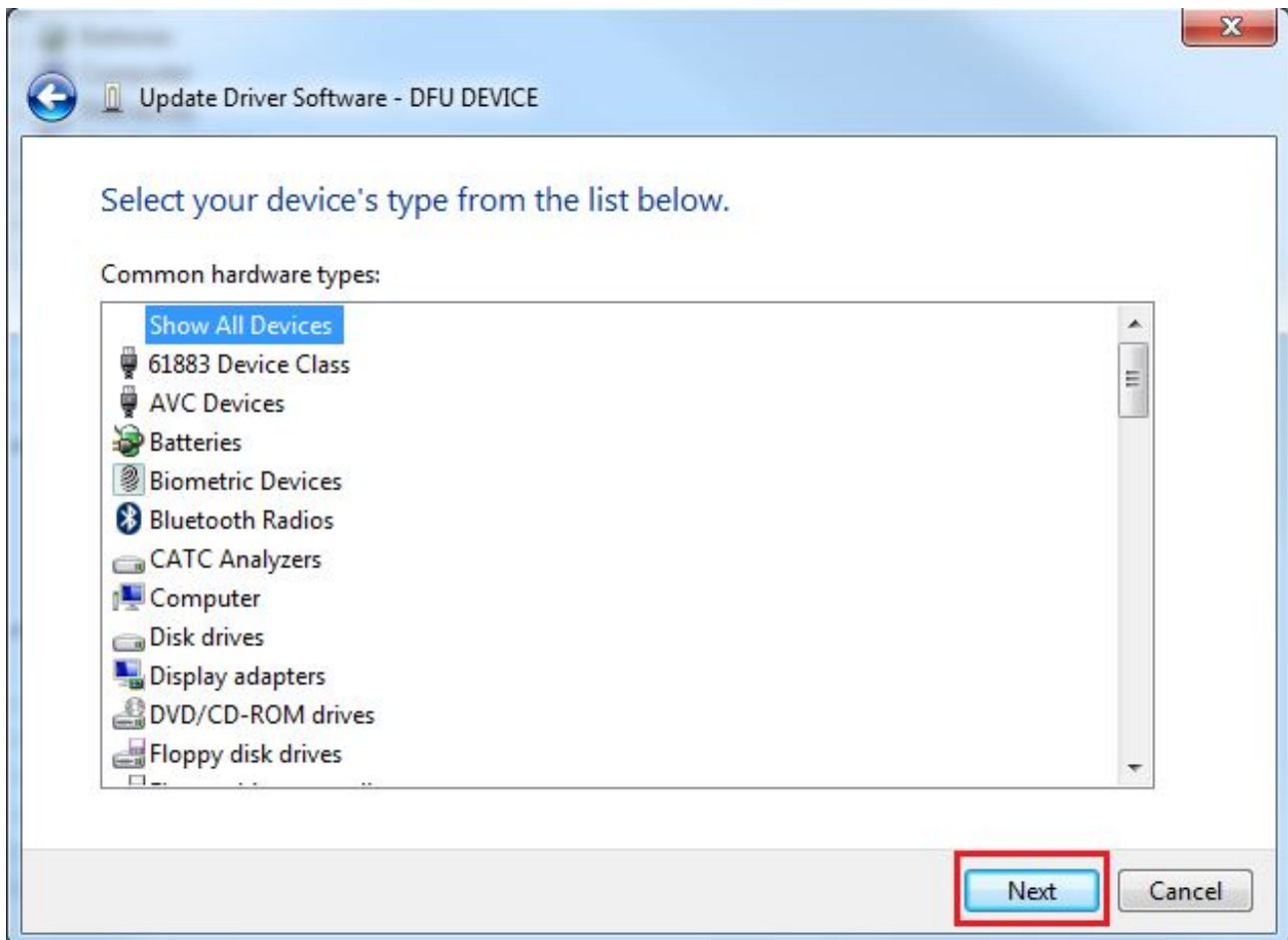
Step 2. Choose "Browse..."



Step 3. Select "Let me pick..."



Step 4. Select "Next"

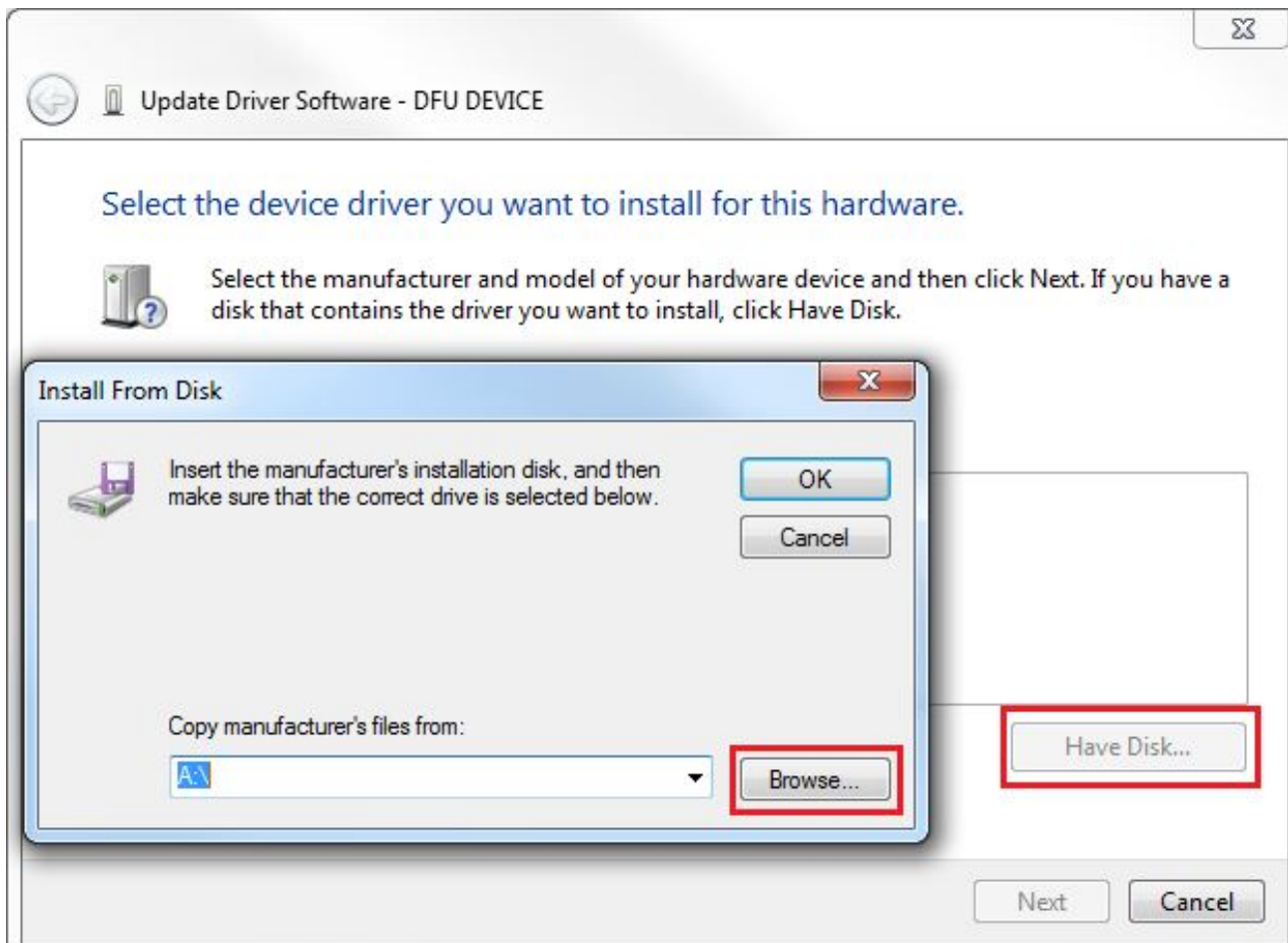


Step 4. Select "Have Disk" and then "Browse" Navigate to your DFU driver location.

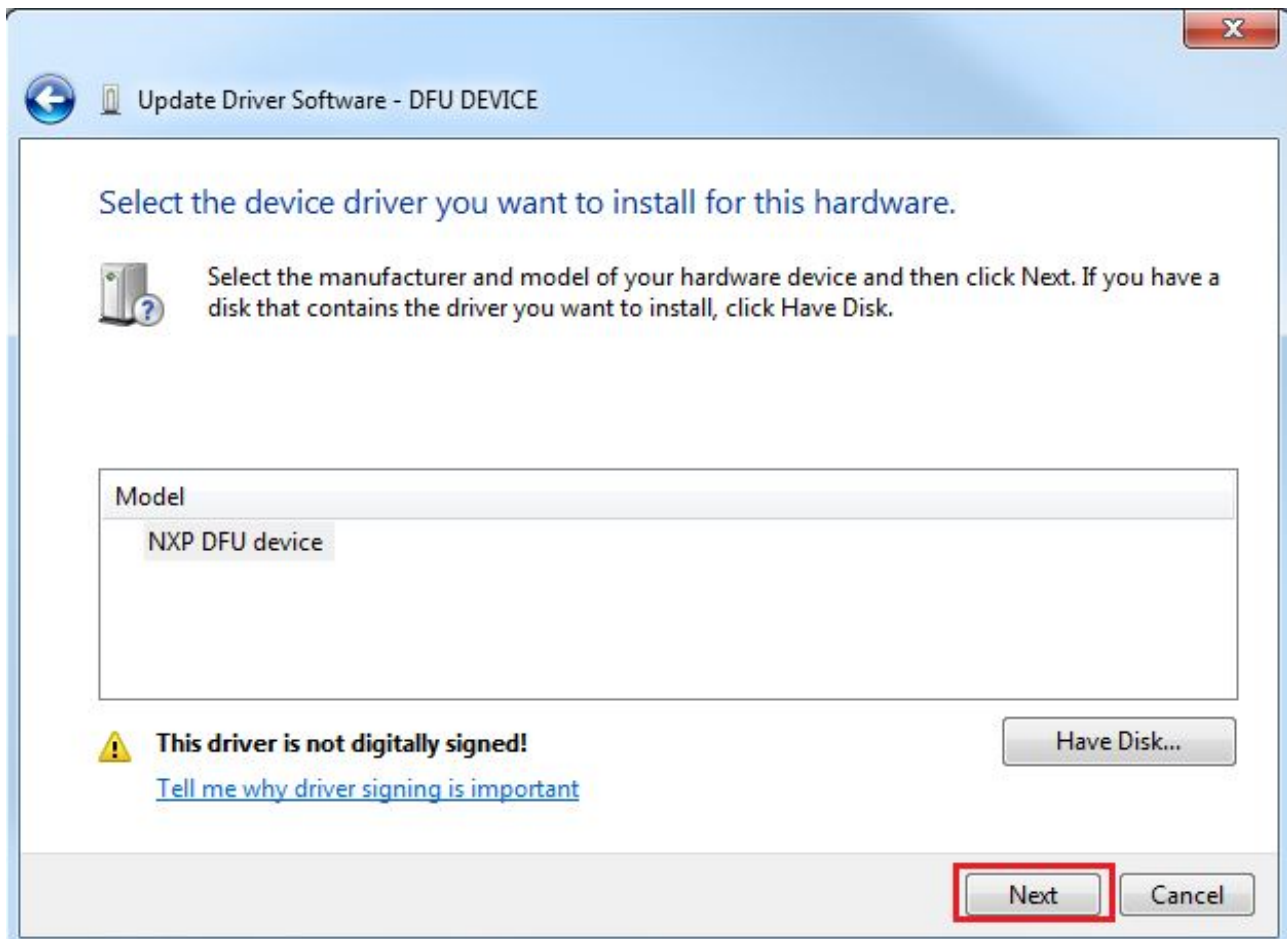
<install_dir>\boards\<board>\usb_examples\usb_device_dfu\inf

or

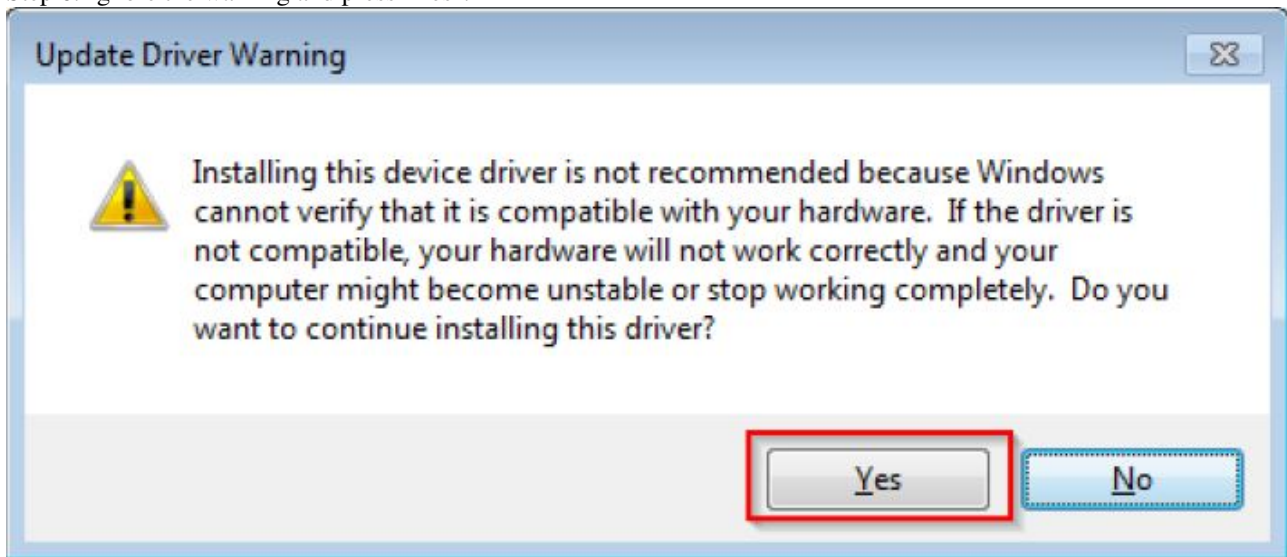
<install_dir>\boards\<board>\usb_examples\usb_device_dfu_lite\inf



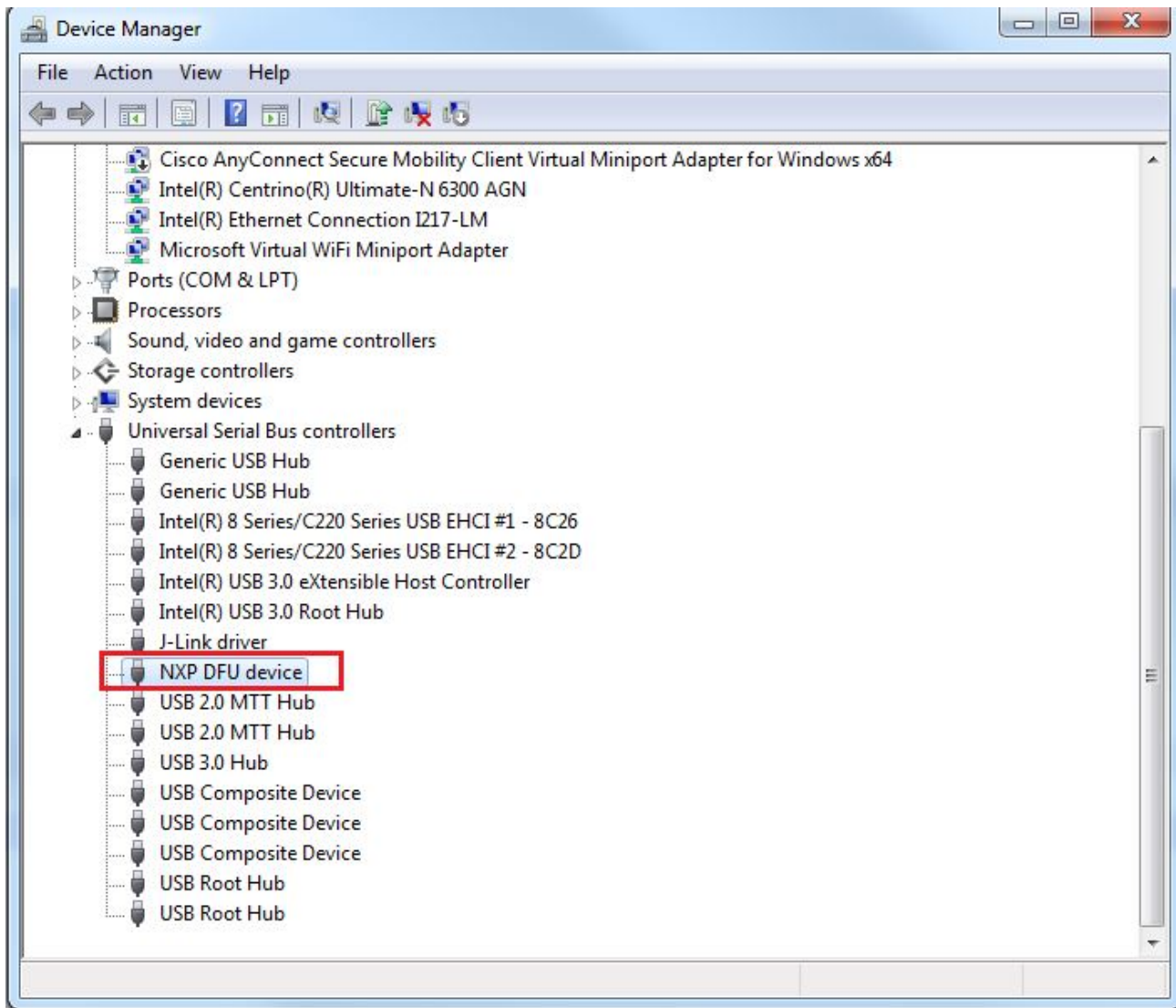
Step 5. Press "Next".



Step 6. Ignore the warning and press "Yes".



Step 7. Now the dfu driver should be installed successfully.



- If a driver signature issue occurs on Windows 8 OS, see the link,
Disabling Driver Signature on Windows 8
- To enable driver signing on Windows OS, see the link,
 - Driver Signing
 - Practical Windows Code and Driver Signing

Adding CRC32 to your own binary

- The dfu-util software could download firmware to dfu device, but the tool could not add CRC32 to the firmware. however,the dfu example will check the CRC32 to confirm that the fireware written into the flash has no bit error. so we need modify the dfu-util source code to add CRC32 to the firmware, and then build the source code, after build, use the newly-build tool to add CRC32 to the firmware.
- To support the feature that add CRC32 to the file for download , please download the dfu-util source code and make these updates.

1. Function dfu_store_filein dfu-util\src\dfu_file.c

This function is updated as follows :

```
/* write suffix, if any */
if (write_suffix) {
    uint8_t dfusuffix[DFU_SUFFIX_LENGTH];

    dfusuffix[0] = file->bcdDevice & 0xff;
    dfusuffix[1] = file->bcdDevice >> 8;
```

```

dfusuffix[2] = file->idProduct & 0xff;
dfusuffix[3] = file->idProduct >> 8;
dfusuffix[4] = file->idVendor & 0xff;
dfusuffix[5] = file->idVendor >> 8;
dfusuffix[6] = file->bcdDFU & 0xff;
dfusuffix[7] = file->bcdDFU >> 8;
dfusuffix[8] = 'U';
dfusuffix[9] = 'F';
dfusuffix[10] = 'D';
dfusuffix[11] = DFU_SUFFIX_LENGTH;

/*crc = dfu_file_write_crc(f, crc, dfusuffix,
    DFU_SUFFIX_LENGTH - 4);*/

dfusuffix[12] = crc;
dfusuffix[13] = crc >> 8;
dfusuffix[14] = crc >> 16;
dfusuffix[15] = crc >> 24;

    crc = dfu_file_write_crc(f, crc, dfusuffix + 12, 4);
}

```

2. after update the source code, build the source to get the tool.
3. if you build the source code on windows 64bit PC, you will get new tool in the following path: install_path-
:\msys64\home\~your user name\build\bin