

Overview

The USB virtual printer application is a simple application to demonstrate a virtual printer functionality. Because there is no printer language parsing, the received raw data is output directly in the debug console. As a result, only plain text is suitable for testing. For other printer language support, such as postscript, implement the corresponding parser.

System Requirements

Hardware requirements

- Mini/micro USB cable
- USB A to micro AB cable
- Hardware (Tower module/base board, and so on) for a specific device
- Personal Computer (PC)

Software requirements

- The project files for lite version examples are in:

`<MCUXpresso_SDK_Install>/boards/<board>/usb_examples/usb_device_printer_virtual_plain_text_lite/<rtos>/<toolchain>`

For non-lite version example, the path is:

`<MCUXpresso_SDK_Install>/boards/<board>/usb_examples/usb_device_printer_virtual_plain_text/<rtos>/<toolchain>`.

Note

The `<rtos>` is Bare Metal or FreeRTOS OS.

Getting Started

Hardware Settings

Note

Set the hardware jumpers (Tower system/base module) to default settings.

Prepare the example

1. Download the program to the target board.
2. Connect the target board to the external power source (the example is self-powered).
3. Power off the target board. Then power on again.
4. Connect a USB cable between the PC and the USB device port of the board.

Note

For detailed instructions, see the appropriate board User's Guide.

Run the example on Windows7

1. Plug in the device, which is running the printer example, into the PC.
2. Wait for the PC to auto-install the driver. When the PC completes the installation, no driver is found as follows:



Figure 1: printer in device manager

Opening the device manager, these devices are shown:



Figure 2: printer in device manager

3. Test generic printer driver. Right click the device in "Other devices" group, select "Update Driver Software...", select "Browse my computer for driver software", select "Let me pick from a list of device drivers on my computer", select "Printers", select "Generic" & "Generic / Text Only", and click on "Next" and "Yes" to install.



Figure 3: printer in device manager

4. After installing the driver, the "Generic / Text Only" printer is available in the "Devices and Printers"
5. Print one text file using this printer.

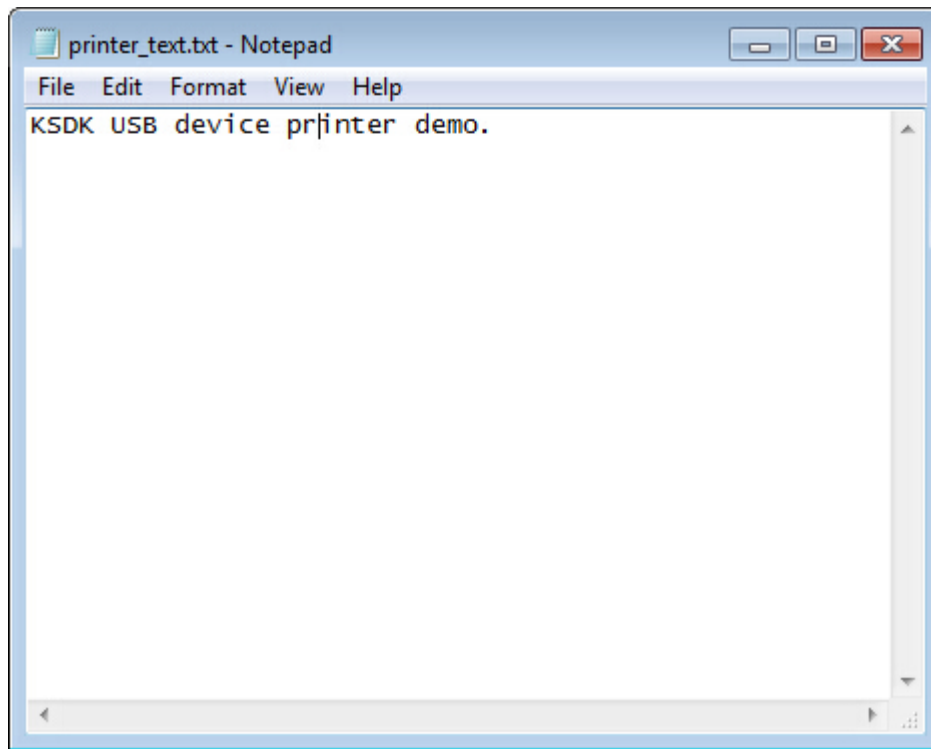


Figure 4: printer in device manager

The debug console data is as follows:

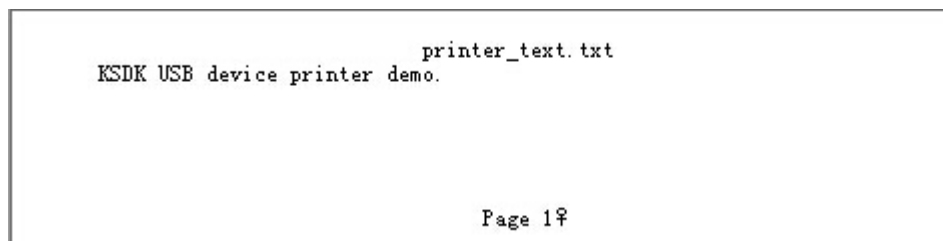


Figure 5: printer in device manager

Run the example on Windows10

1. Plug in the device, which is running the printer example, into the PC.
2. Wait for the PC to auto-install the driver. When the PC completes the installation, opening the device manager, these devices are shown:



Figure 6: printer in device manager

3. Right click on the NXPKsdk printer demo and select "Properties", in the pop-up window, select the "Events" and find the configured port.




Figure 7: find port

4. In Control Panel, open the "Devices and Printers" window, click "Add a printer".



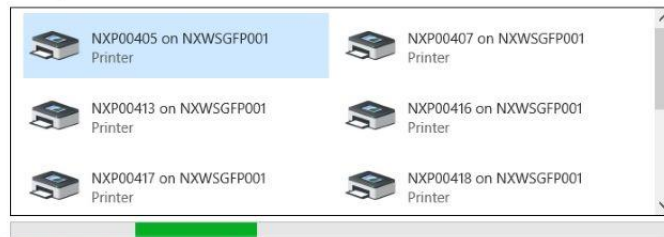
Figure 8: Add a printer

5. In pop-up window, select "The printer that I want isn't listed", select "Add a local printer or network printer with manual settings", select the port that showed in previous "Events" tab, select "Generic" & "Generic / Text Only", select "use the driver that is currently installed", and click on "Next" and "Yes" to install.

 Add a device

Choose a device or printer to add to this PC

Searching for devices



The printer that I want isn't listed

Next

Cancel

←  Add Printer

Find a printer by other options

- ☐ My printer is a little older. Help me find it.
- ☐ Find a printer in the directory, based on location or feature
- ☐ Select a shared printer by name

Browse...

Example: \\computename\printername or
http://computename/printers/printername/printer

- ☐ Add a printer using a TCP/IP address or hostname
- ☐ Add a Bluetooth, wireless or network discoverable printer

☒ Add a local printer or network printer with manual settings

Next

Cancel

←  Add Printer

Choose a printer port

A printer port is a type of connection that allows your computer to exchange information with a printer.

☒ Use an existing port:

☐ Create a new port:

Type of port:

USB008 (Virtual printer port for USB)

COM8: (Serial Port)

COM9: (Serial Port)

FILE: (Print to File)

10.193.100.58 (Standard TCP/IP Port)

COM10: (Local Port)

COM11: (Local Port)

COM12: (Local Port)

COM13: (Local Port)

COM14: (Local Port)

COM15: (Local Port)

COM16: (Local Port)

COM17: (Local Port)

COM18: (Local Port)

COM19: (Local Port)

COM20: (Local Port)

COM21: (Local Port)

COM22: (Local Port)

IR (Local Port)

nul: (Local Port)

PORTPROMPT: (Local Port)

USB001 (Virtual printer port for USB)

USB002 (Virtual printer port for USB)

USB002 (Local Port)

USB003 (Virtual printer port for USB)

USB003 (Local Port)

USB004 (Virtual printer port for USB)

USB005 (Virtual printer port for USB)

USB006 (Virtual printer port for USB)

USB007 (Virtual printer port for USB)

USB008 (Virtual printer port for USB)

Figure 9: Add a printer

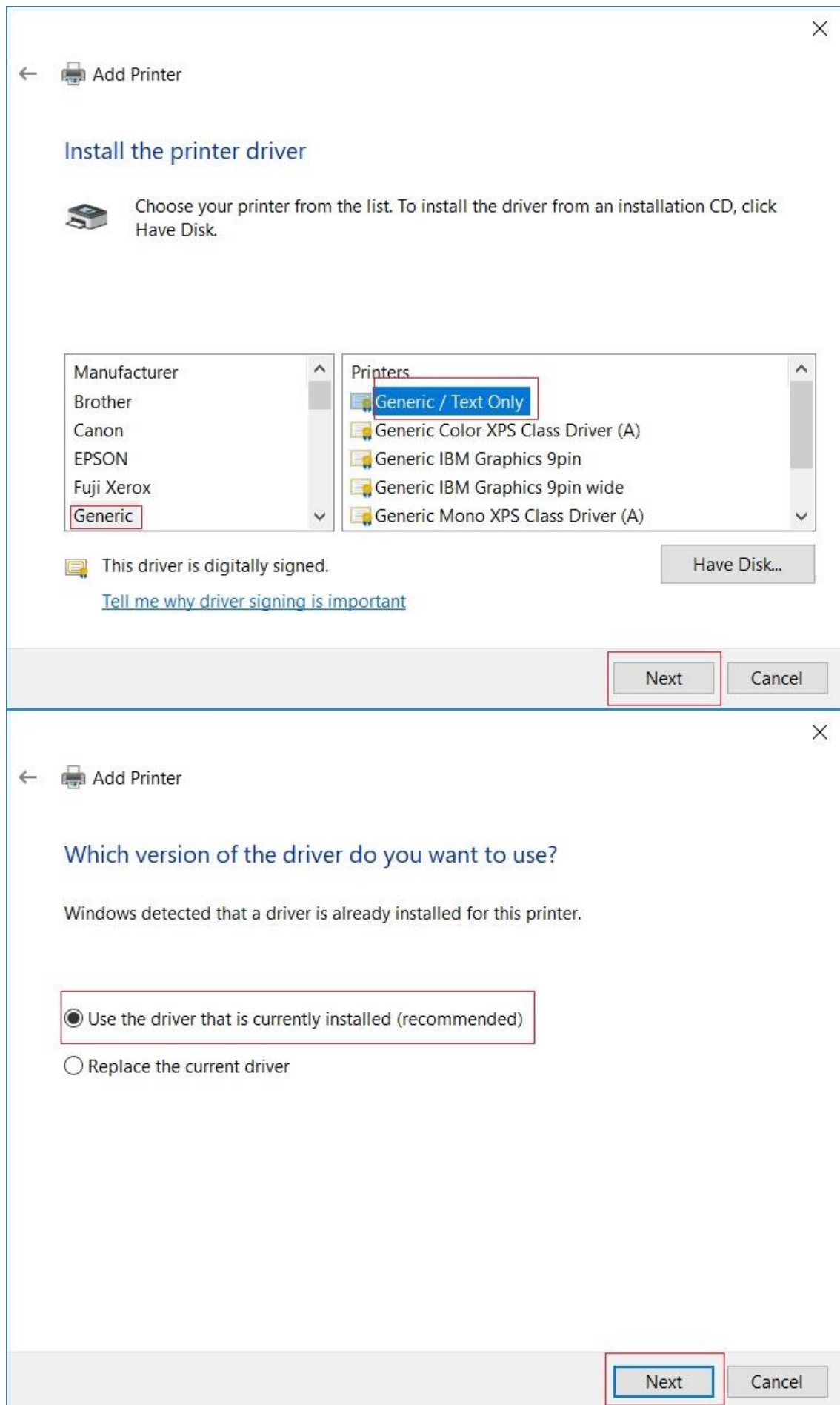


Figure 10: Add a printer

6. After above steps, a "Generic/Text Only" printer is available in "Devices and Printers".
7. Print one text file using this printer.

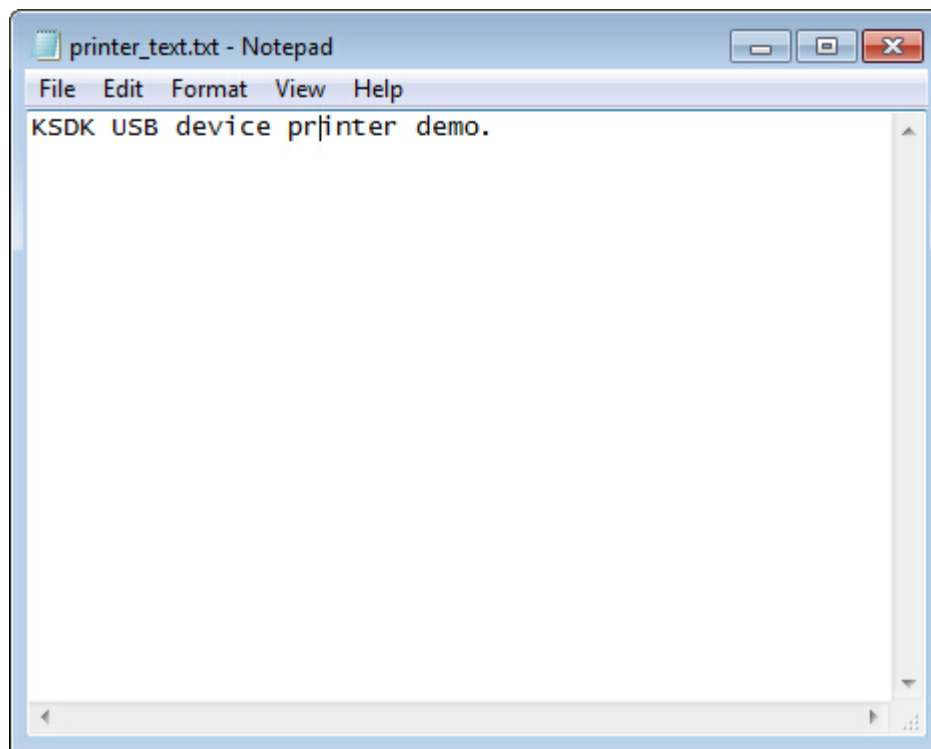


Figure 11: test printer

The debug console data is as follows:

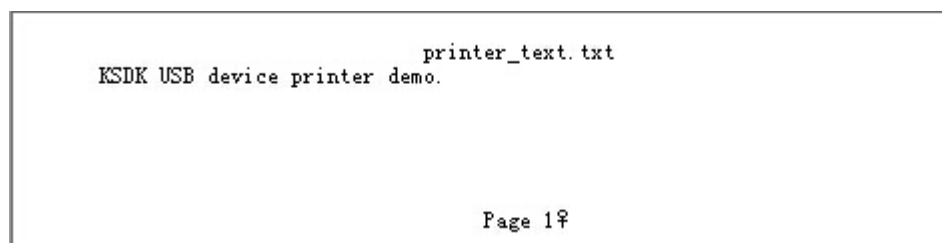


Figure 12: debug console

8. Test postscript printer driver. Right click the "USB printing Support" and select "Uninstall". Unplug and plug in again.
9. Wait for the PC to install the driver as in step 2.
10. In Control Panel, open the "Devices and Printers" window, click "Add a printer", In pop-up window, select "The printer that I want isn't listed", select "Add a local printer or network printer with manual settings", select the port that showed in previous "Events" tab, select "Microsoft" & "Microsoft PS Class Driver", select "use the driver that is currently installed", and click on "Next" and "Yes" to install.
11. Print one text file using this printer. For example, if printing the same file as in step 7, the postscript data is displayed in the debug console. The demo does not parse the data and outputs it to the debug console directly.